



# SHOCK MEASUREMENT OFFERING FROM PCB® AND ENDEVCO

---

PCB® and Endevco manufacture leading-edge shock accelerometer designs that are contributing to the improved measurement of severe mechanical shock.

Our piezoresistive accelerometers are DC responding to avoid integration errors which is critical to the quality of your low frequency measurements. Piezoelectric ICP® accelerometers offer a very high signal output (+/- 5 volts full scale) and the ease of two-wire electrical connectivity.

Our technical experts can help you determine the optimal accelerometer for your measurement application. A brief summary of the technologies available are provided inside this brochure.

## APPLICATIONS

- Mechanical shock testing
- Shock wave monitoring
- Drop and impact testing
- Portable electronic device testing
- High-shock data recorders
- Near and far-field pyroshock testing
- Weapons and rocket testing
- Fuze/safe and arm



## PIEZORESISTIVE ACCELEROMETERS

Piezoresistive high g shock accelerometers are available in both undamped and lightly damped models to provide high-reliability shock and vibration measurements in extreme environments. With available measurement ranges from 2,000 to 200,000 g, these accelerometers feature rugged piezoresistive MEMS sensing elements.

Our in-house MEMS manufacturing techniques allow us to offer a product with compact size, high sensitivity, and exceptional overrange, while ensuring the repeatability and reliability required for mission critical applications. Product variations include single axis or triaxial configurations and screw, stud, and surface mounting options.

## HIGHLIGHTS

- Multiple mounting configurations
- Minimal zero shift after shock
- High survivability in overrange environments
- DC response for long duration transient events
- Ranges up to 200,000 g
- Undamped for broad frequency response or damped for exceptional survivability
- Miniature SMT versions for embedded applications

## UNDAMPED PIEZORESISTIVE ACCELEROMETERS

The Endevco brand of undamped shock accelerometers dates back over four decades and are used on many long standing programs that require high frequency. They are used by our most experienced customers primarily engaged in research and development applications, where careful preparation of the experiment is performed and attention is given to minute instrumentation details such as sample rate, anti-aliasing filter selection and detailed post process analysis.



SPECIFICATIONS					
Model Number	Endevco 7270A	Endevco 7270AM4	Endevco 7270AM6	Endevco 7270AM7	Endevco 7274A
Description	High resonance Undamped Shock standard	High resonance Undamped Stud mount	Rugged Mechanical filter Stud mount	Extremely rugged Undamped Low noise cable	Triaxial Undamped High resonance
Range (g)	$\pm 2000 / \pm 6000 / \pm 20000 / \pm 60000 / \pm 200000$	$\pm 2000 / \pm 6000 / \pm 20000 / \pm 60000 / \pm 200000$	$\pm 2000 / \pm 6000 / \pm 20000 / \pm 60000$	$\pm 2000 / \pm 6000 / \pm 20000 / \pm 60000 / \pm 200000$	$\pm 2000 / \pm 6000 / \pm 20000 / \pm 60000$
Sensitivity (uV/V/g)	10 / 3 / 1 / .3 / .1	10 / 3 / 1 / .3 / .1	10 / 3 / 1 / .3	10 / 3 / 1 / .3 / .1	10 / 3 / 1 / .3
Frequency response (kHz +/-5%)	0-10 / 0-20 / 0-50 / 0-100 / 0-150	0-10 / 0-20 / 0-50 / 0-100 / 0-150	0-10	0-10 / 0-20 / 0-50 / 0-100 / 0-150	0-18 / 0-36 / 0-70 / 0-140
Shock limit (g pk)	10000 / 18000 / 60000 / 180000 / 200000	10000 / 18000 / 60000 / 180000 / 200000	10000 / 18000 / 60000 / 100000	10000 / 18000 / 60000 / 180000 / 200000	6000 / 18000 / 60000 / 180000
Temperature Range - Operating	-67 to +250 °F -55 to +121 °C	-67 to +150 °F -55 to +66 °C	-30 to +150 °F -34 to +66 °C	-67 to +250 °F -55 to +121 °C	-67 to +150 °F -55 to +66 °C
Dimensions (in(mm))	.56 x .28 x .11 (14.22 x 7.1 x 2.79)	.312 hex (7.92 dia.)	.675 x .580 x .621 (17.15 x 14.73 x 15.78)	.56 x .35 x .16 (14.22 x 8.9 x 4.06)	.056 x .304 x .245 (14.22 x 7.72 x 6.22)
Weight (gram)	1.5	1.5	8.4	4	2.9
Excitation voltage (V)	10	10	10	10	5
Mounting method	4-40 screws	1/4-28 UNF-3A stud	1/4-28 integral stud	4-40 screws	4-40 screws

## UNDAMPED PIEZORESISTIVE SURFACE MOUNT ACCELEROMETERS

Endevco undamped surface mount configurations allow for use in circuit board OEM applications.



SPECIFICATIONS		
Model Number	Endevco 71M	Endevco 75
Description	Surface mount Undamped Low mass	Triaxial Undamped Surface mount LCC
Range (g)	$\pm 2000 / \pm 6000 / \pm 20000 / \pm 60000$	$\pm 2000 / \pm 6000 / \pm 20000 / \pm 60000$
Sensitivity (uV/V/g)	10 / 3 / 1 / .3	10 / 3 / 1 / .3
Frequency response (kHz +/-5%)	0-10 / 0-20 / 0-50 / 0-100	0-18 / 0-36 / 0-70 / 0-140
Shock limit (g pk)	10000 / 18000 / 60000 / 120000	10000 / 18000 / 60000 / 180000
Temperature Range - Operating	-65 to +150 °F -54 to +66 °C	-67 to +250 °F -55 to +121 °C
Dimensions (in(mm))	0.25 x .125 x 0.07 (6.35 x 3.18 x 1.78)	0.38 x 0.28 x 0.22 (9.65 x 7.11 x 5.59)
Weight (gram)	0.06	1.2
Excitation voltage (V)	10	5
Mounting method	Adhesive	SMT or Adhesive

# DAMPED PIEZORESISTIVE ACCELEROMETERS

The PCB and Endevco brands of lightly damped shock accelerometers feature over range stops for improved survivability. Damping also helps improve data recorder resolution compared to undamped versions.



SPECIFICATIONS				
Model Number	Endevco 2262B	PCB 3501B12xxKG	Endevco 7280AM4	PCB 3991B12xxKG
Description	High Sensitivity Multi-mode damping Rugged to 10000 g shocks	Stud mount Lightly damped	Extremely rugged Lightly damped	Thru hole mount Lightly damped
Range (g)	±1000 / ±2000 / ±6000	±20000 / ±60000	±2000 / ±20000 / ±60000	±20000 / ±60000
Sensitivity (uV/V/g)	0.45 / 0.3 / 0.015	1 / .3	30 / 1.6 / .5	1 / .3
Frequency response (kHz)	0 to 3000	0-10 / 0-20	0-5 / 0-10 / 0-13	0-10 / 0-20
Shock limit (g pk)	10000	60000 / 100000	10000 / 80000 / 240000	60000 / 100000
Temperature Range - Operating	-67 to 257 °F -55 to 125 °C	-65 to 250 °F -54 to 121 °C	-67 to +250 °F -55 to +121 °C	-65 to 250 °F -54 to 121 °C
Dimensions (in(mm))	0.935 x 0.625 x 0.79 23.68 x 15.88 x 20.1	0.375 HEX 9.5	0.312 HEX 7.92	0.12 x 0.56 x 0.28 3.05 x 14.22 x 7.11
Weight (gm)	22	2.5	2.1	1.3
Excitation voltage (V)	10	10	10	10
Mounting method	10-32 detachable stud	1/4-28 UNF-3A stud	1/4-28 UNF-3A stud	4-40 screws



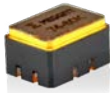
SPECIFICATIONS				
Model Number	Endevco 7280AM7	Endevco 7280A	PCB 3503A11xxKG	Endevco 7284A
Description	Extremely rugged Lightly damped Low noise cable	Extremely rugged Lightly damped Low power consumption	Thru hole mount Lightly damped	Thru hole mount Lightly damped
Range (g)	±2000 g / ±20000 g / ±60000	±2000 g / ±20000 g / ±60000	±20000 g / ±60000	±2000 g / ±20000 / ±60000
Sensitivity (uV/V/g)	30 / 1.6 / .5	30 / 1.6 / .5	1 / .3	30 / 1.6 / .5
Frequency response (kHz)	0-5 / 0-10 / 0-13	0-5 / 0-10 / 0-13	0-10 / 0-20	0-10 / 0-10 / 0-20
Shock limit (g pk)	10000 / 80000 / 240000	10000 / 80000 / 240000	60000 / 80000	10000 / 60000 / 180000
Temperature Range - Operating	-67 to 250 °F -55 to +121 °C	-67 to 250 °F -55 to +121 °C	-65 to +250 °F -54 to +121 °C	-67 to +250 °F -55 to +121 °C
Dimensions (in(mm))	0.56 x 0.35 x 0.16 (14.2 x 8.90 x 4.06)	0.56 x 0.35 x 0.16 (14.2 x 8.90 x 4.06)	0.25 x 0.47 x 0.47 (6.35 x 11.81 x 11.81)	0.56 x .304 x .245 (14.22 x 7.72 x 6.22)
Weight (gm)	4	4	2.83	3.6
Excitation voltage (V)	10	10	10	5
Mounting method	4-40 screws	4-40 screws	4-40 screws	4-40 screws

# LIGHTLY DAMPED PIEZORESISTIVE SURFACE MOUNT SHOCK ACCELEROMETERS

The PCB and Endevco brands of lightly damped shock accelerometers feature over range stops for improved survivability. Damping also helps improve data recorder resolution compared to undamped versions.



SPECIFICATIONS		
Model Number	PCB 3501A20xxKG	Endevco 72
Description	Lightly damped Rugged	Lightly damped Rugged ESD protection
Range (g)	±20000 / ±60000	±2000 / ±20000 / ±60000
Sensitivity (uV/V/g)	1 / .3	30 / 1.6 / .6
Frequency response (kHz)	0-10 / 0-20	0-10 / 0-10 / 0-20
Shock limit (g pk)	60000 / 100000	10000 / 80000 / 240000
Temperature Range (Operating)	-65 to 250 °F -54 to +121 °C	-65 to +160 °F -54 to +71 °C
Dimensions (in(mm))	.085 x .236 x .138 (2.16 x 6.00 x 3.50)	0.25 x 0.15 x .085 (6.35 x 3.81 x 2.16)
Weight (gm)	0.15	0.16
Excitation voltage (V)	10	5
Mounting method	SMT or adhesive	SMT or adhesive



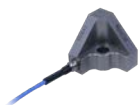
SPECIFICATIONS		
Model Number	PCB 3503C20xxKG	Endevco 74
Description	Triaxial Lightly damped Surface mount LCC	Triaxial Damped Surface mount LCC
Range (g)	±20000 / ±60000	±2000 / ±20000 / ±60000
Sensitivity (uV/V/g)	1 / .3	30 / 1.6 / .5
Frequency response (kHz)	0-10 / 0-20	0-5 / 0-10 / 0-13
Shock limit (g pk)	60000 / 80000	10000 / 60000 / 180000
Temperature Range (Operating)	-65 to 250 °F -54 to +121 °C	-67 to +250 °F -55 to +121 °C
Dimensions (in(mm))	0.15 x 0.38 x 0.28 (3.8 x 9.6 x 7.1)	0.38 x 0.28 x 0.22 (9.65 x 7.11 x 5.59)
Weight (gm)	0.82	1.2
Excitation voltage (V)	10	5
Mounting method	SMT or adhesive	SMT or adhesive

# ICP® MECHANICALLY ISOLATED & ELECTRICALLY FILTERED ACCELEROMETERS

Piezoelectric ICP® accelerometers afford a very high signal output (+/- 5 volts full scale) and the ease of two-wire electrical connectivity. Their inherent ruggedness enables them to be severely over ranged without damage. The addition of internal mechanical isolation minimizes the high frequency stress that is transferred to their sensing elements. This mechanical isolation, coupled with an internal 2-pole electrical filter built into the ICP® circuitry, tailors the overall accelerometer response to assure data quality to 10 kHz and up to 100,000 g's. Full scale linearity is verified through calibration in accordance with MIL-STD-810.



SPECIFICATIONS				
Model Number	PCB 350C23	PCB 350C24	PCB 350D02	PCB 350B01
Description	Single Axis Integral Cable Mechanically Isolated	Single Axis Integral Cable Mechanically Isolated	Single Axis Integral Cable Mechanically Isolated	Single Axis Integral Cable Mechanically Isolated
Range (g)	±10000 g pk	±5000 g pk	±50000 g pk	±100000 g pk
Sensitivity (mV/g)	0.5	1.0	0.1	0.05
Frequency response (Hz)	0.4 - 10000	0.4 - 10000	4 - 10000	4 - 10000
Shock limit (g pk)	±50000	±50000	±150000	±150000
Temperature Range (Operating)	-10 to +150 °F -23 to +66 °C	-10 to +150 °F -23 to +66 °C	-10 to +150 °F -23 to +66 °C	-10 to +150 °F -23 to +66 °C
Dimensions (in(mm))	0.375 x 0.88 9.5 x 22.4	0.375 x 0.88 9.5 x 22.4	0.375 x 0.87 9.5 x 22.1	0.375 x 1.04 9.5 x 26.5
Weight (gm)	5.4	5.4	4.5	5.5
Excitation voltage (V)	20 - 30	20 - 30	20 - 30	20 - 30
Mounting method	1/4-28 UNF-3A stud	1/4-28 UNF-3A stud	1/4-28 UNF-3A stud	1/4-28 UNF-3A stud



SPECIFICATIONS				
Model Number	PCB 350B41	PCB 350B42	PCB 350B43	PCB 350B44
Description	Triaxial Hermetically Sealed Mechanically Isolated	Triaxial Hermetically Sealed Mechanically Isolated	Triaxial Hermetically Sealed Mechanically Isolated	Triaxial Hermetically Sealed Mechanically Isolated
Range (g)	±100000	±50000	±10000	±5000
Sensitivity (mV/g)	0.05	0.1	0.5	1.0
Frequency response (Hz)	4 - 10000	4 - 10000	0.4 - 10000	0.4 - 10000
Shock limit (g pk)	± 150,000	± 150,000	±50000	±50000
Temperature Range (Operating)	-10 to +150 °F -23 to +66 °C	-10 to +150 °F -23 to +66 °C	-10 to +150 °F -23 to +66 °C	-10 to +150 °F -23 to +66 °C
Dimensions (in(mm))	1.02 x 1.02 x 1.02 (26.0 x 26.0 x 26.0)	1.02 x 1.02 x 1.02 (26.0 x 26.0 x 26.0)	1.02 x 1.02 x 1.02 (26.0 x 26.0 x 26.0)	1.02 x 1.02 x 1.02 (26.0 x 26.0 x 26.0)
Weight (gm)	27	27	27	27
Excitation voltage (V)	20 - 30	20 - 30	20 - 30	20 - 30
Mounting method	Through Hole, 1/4-28 x .87 screw	Through Hole, 1/4-28 x .87 screw	Through Hole, 1/4-28 x .87 screw	Through Hole, 1/4-28 x .87 screw



# SIGNAL CONDITIONING FOR HIGH-G SHOCK



SPECIFICATIONS			
Model Number	ENDEVCO 4418	PCB 482C27	PCB 483C28
Features	PR	PR / ICP®	PR / ICP®
Channels	1	4	8
Gain	1, 10, 100	0.1 to 200	0.1 to 200
Power Requirements (VAC)	Battery powered, rechargeable	AC	AC



SPECIFICATIONS	
Model Number	ENDEVCO 4416C
Features	ICP®
Channels	1
Gain	1,10, 100
Power Requirements (VAC)	Battery powered, rechargeable



**3425 Walden Avenue, Depew, NY 14043 USA**

pcb.com | info@pcb.com | 800 828 8840 | +1 716 684 0001



**10869 NC Highway 903, Halifax, NC 27839 USA**

endevco.com | sales@endevco.com | 866 363 3826

© 2023 PCB Piezotronics - all rights reserved. PCB Piezotronics is a wholly-owned subsidiary of Amphenol Corporation. Endevco is an assumed name of PCB Piezotronics of North Carolina, Inc., which is a wholly-owned subsidiary of PCB Piezotronics, Inc. Accumetrics, Inc. and The Modal Shop, Inc. are wholly-owned subsidiaries of PCB Piezotronics, Inc. IMI Sensors and Larson Davis are Divisions of PCB Piezotronics, Inc. Except for any third party marks for which attribution is provided herein, the company names and product names used in this document may be the registered trademarks or unregistered trademarks of PCB Piezotronics, Inc., PCB Piezotronics of North Carolina, Inc. (d/b/a Endevco), The Modal Shop, Inc. or Accumetrics, Inc. Detailed trademark ownership information is available at [www.pcb.com/trademarkownership](http://www.pcb.com/trademarkownership).

EDV-AERO-ShockBrochure-0623