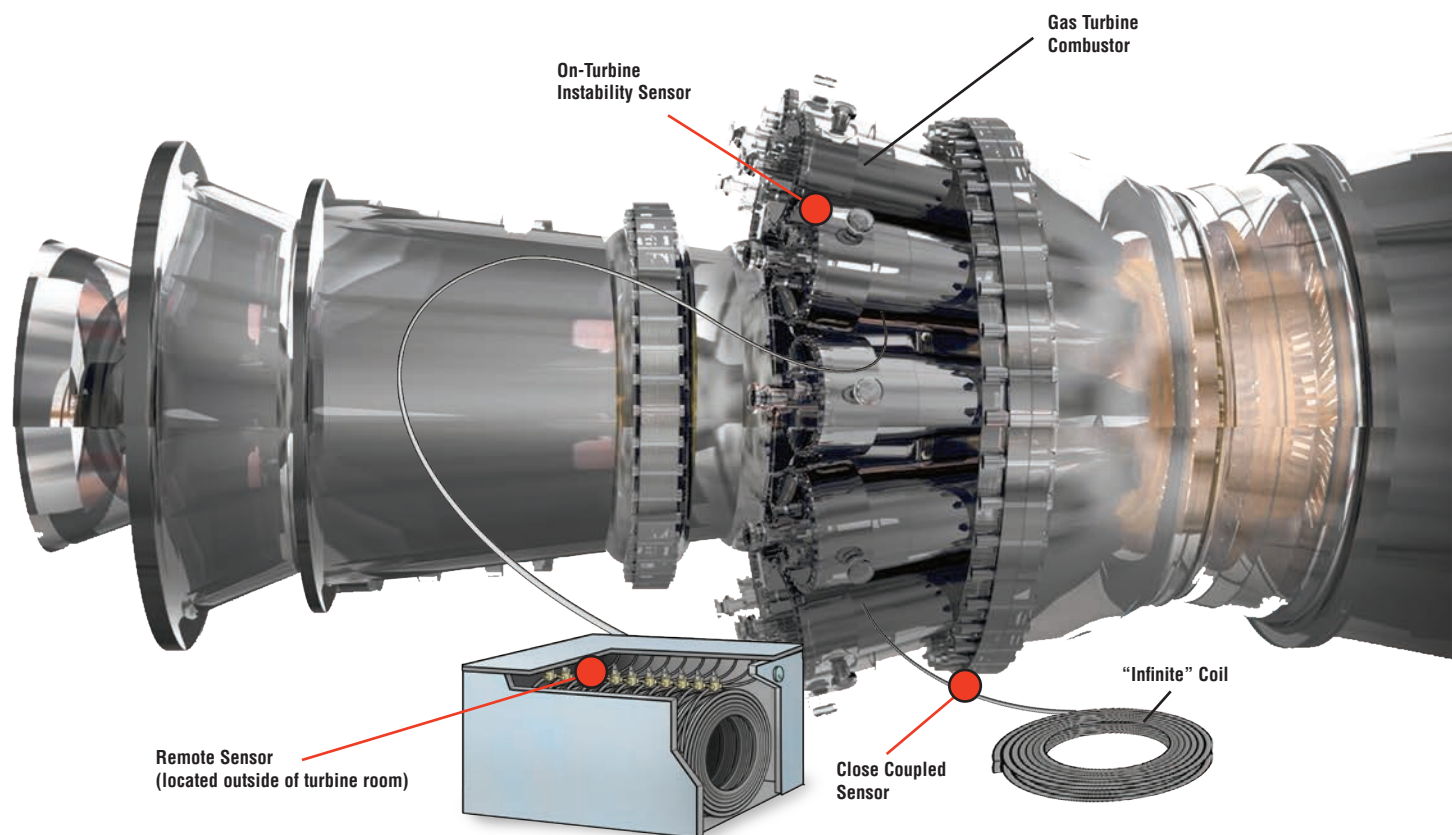




# COMBUSTION DYNAMICS INSTRUMENTATION



## ● SUGGESTED SENSOR PLACEMENT

## COMBUSTION DYNAMICS INSTRUMENTATION

The diagram above shows a typical setting for a gas turbine in a power generation plant. Shown within the illustration are the three standard methods of measuring pressure; Remote, Close Coupled and On-Turbine Instability Sensor (OTIS). The red bullets indicate the location of the actual sensor for each different method.

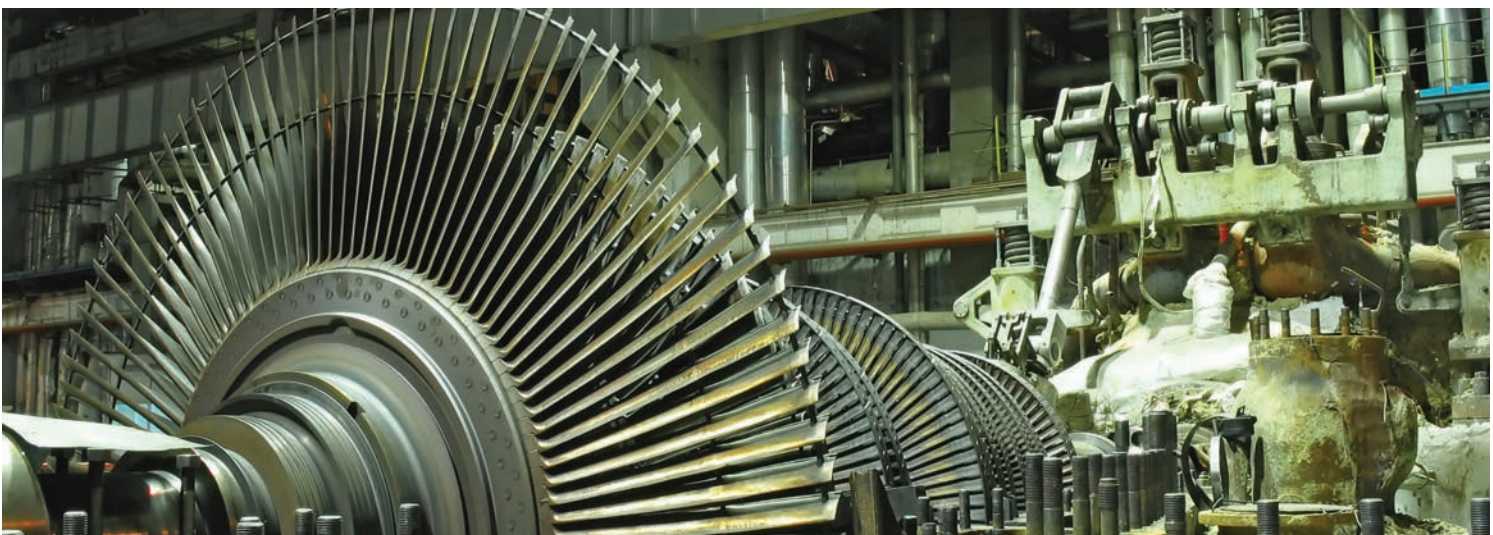
For more than 40 years, PCB® has specialized in the design and manufacture of innovative sensors and measurement systems for the gas turbine market. In those four decades, our expertise in combustion dynamics instrumentation has met the industry's most demanding requirements for dynamic combustion measurement and turbine engine monitoring.

With the move toward increased fuel efficiency and lower exhaust emissions, today's gas turbine engines are based on technological innovation yet also bring potential problems. Burning a leaner flame keeps NOx emissions low but at the same time increases instability (combustion dynamics) in the

gas turbine engine. This instability can damage components in the combustion chamber such as nozzles, baskets and transition pieces, as well as downstream components such as blades, resulting in downtime and loss of revenue.

IMI's instrumentation is designed to detect and measure dynamic pressure spikes, pulsations and surges in gas turbine engines. Our pressure sensors have three basic applications for detecting and measuring dynamic pressure phenomena and combustion instability in gas turbine engines: remote sensors, close coupled sensors and On-turbine Instability Sensors (OTIS).

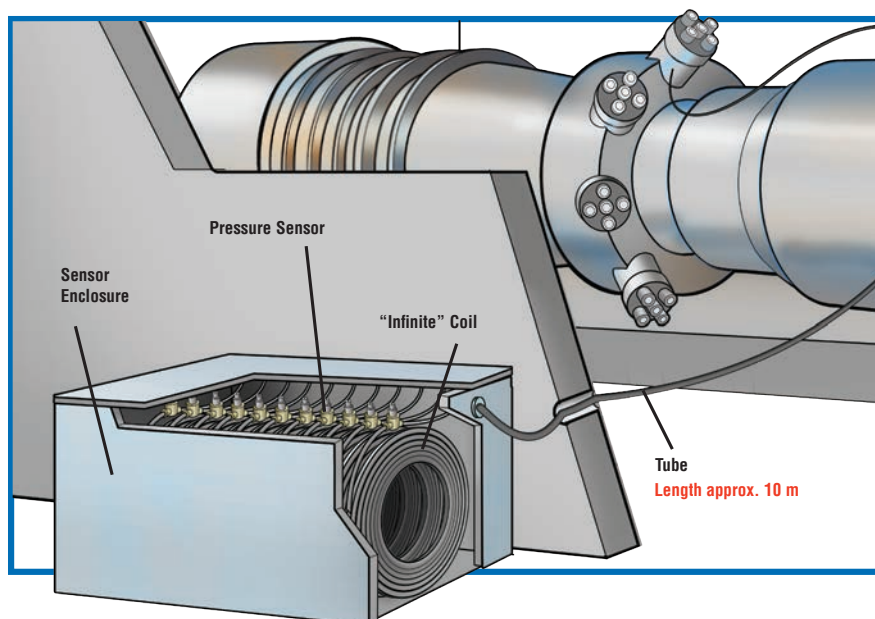




## REMOTE SENSORS

These pressure sensors have either a portable or permanent configuration. Portable systems consist of pressure sensors that are connected to sensing lines running to some or all of the combustors. Similar to the portable systems, permanent systems provide sensors mounted outside the turbine enclosure.

The sensors are then connected through sensing lines (tubing) to each combustor. Because of the long sensing lines involved, the ability to “purge” condensation is required. There are advantages to this simple, low cost approach. Because the sensors are mounted outside the turbine enclosure, the conditions the sensors must endure are relatively mild, thus allowing for the use of less expensive sensors with longer life expectancy. In addition, these sensors can be serviced while the turbine is online.



### ICP® PRESSURE SENSOR

MODEL 121A44

Sensitivity: 100 mV/psi

Measurement Range:

50 psi pk

316 stainless steel diaphragm

1/4" NPT fitting



### ICP® PRESSURE SENSOR

MODEL 102M205

Sensitivity: 50 mV/psi

Measurement Range: 100 psi pk

316 stainless steel diaphragm

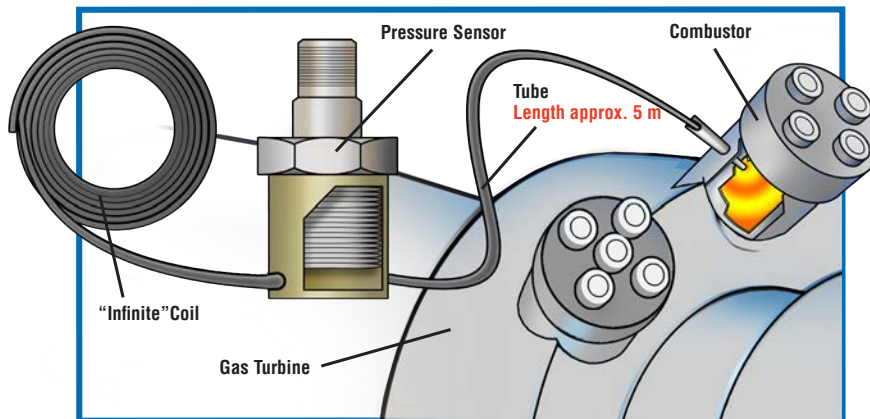
3/8-24 UNF fitting



## CLOSE COUPLED SENSORS

Close coupled sensors permanently mounted to a gas turbine are ideal for monitoring combustion dynamics (instability). Operating at a wider frequency range than remote sensors, the high sensitivity and higher-temperature capability of these sensors allow for precision measurement in turbine locations where the application of other instrumentation is not possible.

Close coupling of the sensors to the combustor enables the measurement and detection of dynamic pressure phenomena such as high frequency events that can cause damage to downstream components such as blades. Like the portable and permanent remote sensors, close coupled sensors also require a purging system to eliminate condensation.



### HIGH TEMPERATURE PRESSURE SENSOR

MODEL EX171A01

Sensitivity: 1200 pC/psi

Measurement Range: 10 psi

Frequency Range: Up to 5 kHz



### IN-LINE CHARGE CONVERTER

MODEL 422E55/D

Sensitivity: 0.5 mV/pC

Voltage Output:  $\pm 2.5$  V pk

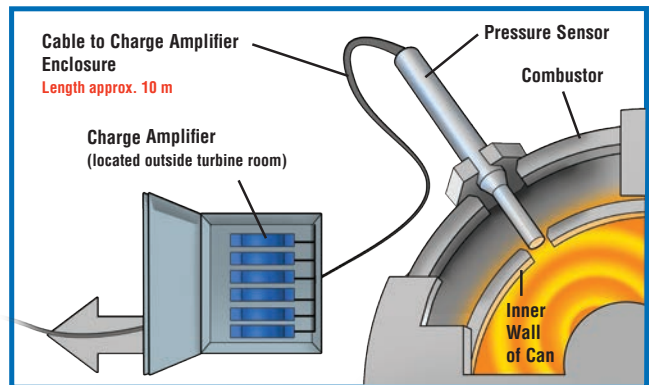
Temperature Range (Operating):  
-65 to +250 °F

Housing Material: Stainless steel



## ON-TURBINE INSTABILITY SENSORS (OTIS)

High temperature sensors directly mounted to the combustor basket provide 24/7, consistent, reliable combustion dynamics data monitoring so that tuning changes can be made at anytime. On-Turbine Instability Sensors allow for diagnostics, part fatigue analysis and the ability to continuously monitor and control emissions. The higher frequency capability of the OTIS sensors enable the use of auto-tuning and online diagnostic monitoring systems. In addition, these sensors provide an output that can easily connect to legacy combustion dynamics monitoring systems. By having sensors directly mounted to the combustor, operators save time during combustion analysis.



### EXTREME TEMPERATURE PRESSURE SENSOR

MODEL 176A02

Sensitivity: 6pC/psi

Measurement Range: 725 psi pk

Frequency Range: Up to 20 kHz



### EXTREME TEMPERATURE PRESSURE SENSOR

MODEL 176A03

Sensitivity: 16 pC/psi

Measurement Range: 290 psi pk

Frequency Range: Up to 10 kHz



### HIGH TEMPERATURE PRESSURE SENSOR

MODEL 176A04

Sensitivity: 15.5 pC/psi

Measurement Range: 300 psi pk

Frequency Range: Up to 10 kHz



### VERY HIGH TEMPERATURE PRESSURE SENSOR

MODEL 176A05

Sensitivity: 52 pC/psi

Measurement Range: 725 psi pk

Frequency Range: Up to 8 kHz



### VERY HIGH TEMPERATURE PRESSURE SENSOR

MODELS 176M03 and 176M09

Sensitivity: 17 pC/psi

Measurement Range: 20 psi pk

Frequency Range: Up to 10 kHz



### VERY HIGH TEMPERATURE PRESSURE SENSOR

MODELS 176M07 and 176M12

Sensitivity: 17 pC/psi

Measurement Range: 20 psi pk

Frequency Range: Up to 6 kHz

## HIGH TEMPERATURE ACCELEROMETERS

Vibration monitoring of gas turbines can provide crucial information to diagnose potential problems, leading to an increase in uptime and a decrease in unplanned maintenance, catastrophic failures and accidents. Innovations in high temperature accelerometer technology for gas turbine monitoring now enable vibration measurement in extreme heat environments up to +1200 °F (+649 °C). IMI's high temperature accelerometers come in a variety of frequencies, temperature ranges and configurations. Integral charge amplifiers allow for use with standard data acquisition equipment.



### EXTREME TEMPERATURE CHARGE ACCELEROMETER

MODELS 357A64 and 357M168

Sensitivity: 1.15 pC/g

Measurement Range:  $\pm 1000$  g pk

Frequency Range: Up to 10 kHz

UHT-12™ element



### VERY HIGH TEMPERATURE TRIAXIAL CHARGE ACCELEROMETER

MODEL EX356A73

Sensitivity: 3.2 pC/g

Measurement Range:  $\pm 500$  g pk

Frequency Range: Up to 4 kHz

UHT-12™ element



### EXTREME TEMPERATURE CHARGE ACCELEROMETER

SERIES EX357E9X AND EX357A9X

Sensitivity: 2.3 pC/g

(EX357E92/93), 3.3 pC/g  
(EX357A94/95) or 5.0 pC/g  
(EX357E90/91)

Measurement Range:  $\pm 1000$  g pk

Frequency Range: Up to 3.0 kHz

## DIFFERENTIAL CHARGE AMPLIFIERS



### DIFFERENTIAL CHARGE AMPLIFIER

MODEL 422M182

Sensitivity: 4 mV/pC

Voltage Output:  $\pm 5$  V pk

Temperature Range (Operating):  
-60 to +185 °F



### DIFFERENTIAL CHARGE AMPLIFIER

MODEL EX682A40

Sensitivity: 10 mV/pC

Voltage Output:  $\pm 2.5$  V pk

Temperature Range (Operating):  
-40 to +176 °F



### DIFFERENTIAL CHARGE AMPLIFIER

MODEL 421B3X

Sensitivity: Configurable

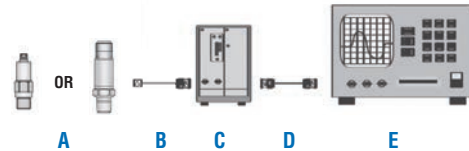
Voltage Output:  $\pm 5$  V pk

Temperature Range (Operating):  
-22 to +185 °F

## FOR REMOTE PRESSURE SENSORS

### MODEL 121A44:

- A** Model 121A44 – ICP® Pressure Sensor
- B** Model 052BPXXXAC – Cable with 2-socket MIL connector to BNC plug
- C** ICP® sensor signal conditioner (Optional)
- D** Model 012A03 – Cable with BNC plug to BNC plug (Optional)
- E** Readout, recording or data acquisition device



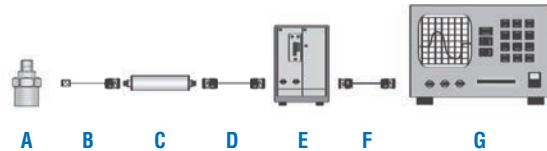
### MODEL 102M205:

- A** Model 102M205 – ICP® Pressure Sensor
- B** Model 003CXX – Cable with 10-32 plug to BNC plug
- C** ICP® sensor signal conditioner (Optional)
- D** Model 012A03 – Cable with BNC plug to BNC plug (Optional)
- E** Readout, recording or data acquisition device

## FOR CLOSE COUPLED PRESSURE SENSORS

### MODEL EX171A01:

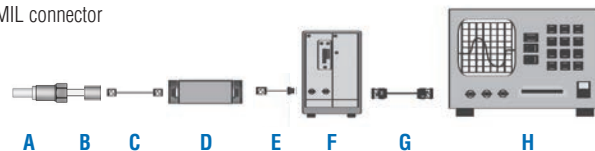
- A** Model EX171A01 – High Temperature Pressure Sensor
- B** Model 045ERXXXAC – Cable with 2-socket MIL connector to BNC plug
- C** Model 422E55/D – In-Line Charge Converter (Optional)
- D** Model 012A03 – Cable with BNC plug to BNC plug (Optional)
- E** ICP® sensor signal conditioner (Optional)
- F** Model 012A03 – Cable with BNC plug to BNC plug (Optional)
- G** Readout, recording or data acquisition device



## FOR ON-TURBINE INSTABILITY PRESSURE SENSORS

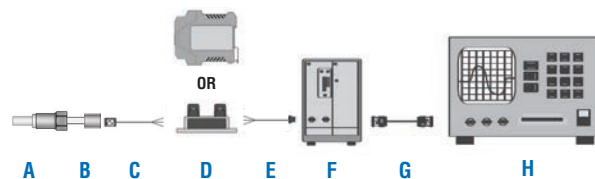
### MODELS 176AXX AND 176MXX

- A** Model 176AXX or 176MXX – Differential Charge Pressure Sensor
- B** Model 013GNXXXGP- Hardline cable with 2-socket 7/16-27 connector to 2-pin 7/16-27 connector (Model 176A04 only)
- C** Model 045M19B – Softline cable with 2-socket 7/16-27 connector to 2-socket MIL connector
- D** Model 422M182 – Differential Charge Amplifier
- E** Model 012A03 – Softline cable with BNC plug to BNC plug
- F** ICP® signal conditioner (Optional)
- G** Model 012A03 – Softline cable with BNC plug to BNC plug (Optional)
- H** Readout, recording or data acquisition device



**OR**

- A** Model 176AXX or 176MXX – Differential Charge Pressure Sensor
- B** Model 013GNXXXGP- Hardline cable with 2-socket 7/16-27 connector to 2-pin 7/16-27 connector (Model 176A04 only)
- C** Model 045M21B – Softline cable with 2-socket 7/16-27 connector to pigtails
- D** Model 421B3X or EX682A40 – Differential Charge Amplifier
- E** Model 052ADXXXAC – Softline cable with pigtails to BNC plug
- F** ICP® signal conditioner (Optional)
- G** Model 012A03 – Softline cable with BNC plug to BNC plug (Optional)
- H** Readout, recording or data acquisition device





**3425 Walden Avenue, Depew, NY 14043 USA**

[pcb.com/imi-sensors](http://pcb.com/imi-sensors) | [imi@pcb.com](mailto:imi@pcb.com) | 800 959 4464 | +1 716 684 0003

© 2022 PCB Piezotronics - all rights reserved. PCB Piezotronics is a wholly-owned subsidiary of Amphenol Corporation. Endevco is an assumed name of PCB Piezotronics of North Carolina, Inc., which is a wholly-owned subsidiary of PCB Piezotronics, Inc. Accumetrics, Inc. and The Modal Shop, Inc. are wholly-owned subsidiaries of PCB Piezotronics, Inc. IMI Sensors and Larson Davis are Divisions of PCB Piezotronics, Inc. Except for any third party marks for which attribution is provided herein, the company names and product names used in this document may be the registered trademarks or unregistered trademarks of PCB Piezotronics, Inc., PCB Piezotronics of North Carolina, Inc. (d/b/a Endevco), The Modal Shop, Inc. or Accumetrics, Inc. Detailed trademark ownership information is available at [www.pcb.com/trademarkownership](http://www.pcb.com/trademarkownership).

IMI-APP-Combustion-0522